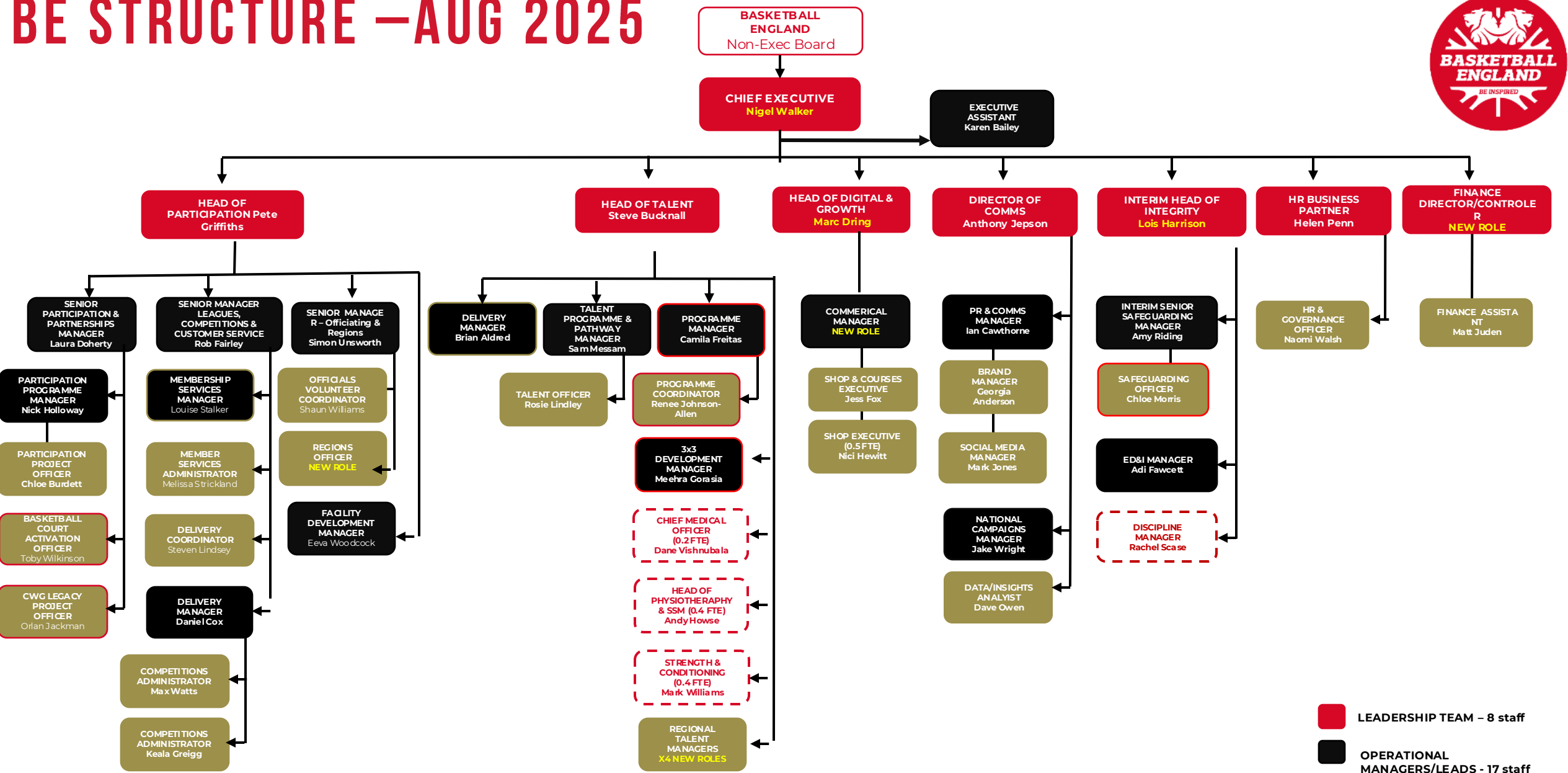


BE STRUCTURE –AUG 2025



- LEADERSHIP TEAM – 8 staff
- OPERATIONAL MANAGERS/LEADS - 17 staff
- OFFICER & EXECUTIVE – 20 staff
- CONTRACTED STAFF – 4 Staff
- FIXED TERM CONTRACT – 6 Staff